

OLZ Smart Invest Dynamic ESG

Class I | for qualified investors



31.10.2021

For marketing purposes

MSCI ESG Rating: A

Fund Portrait

OLZ Smart Invest Dynamic ESG is a mixed fund that invests in money market securities, in first-class bonds and in equities worldwide. The fund is suitable for investors who want to systematically manage their equity exposure between 0% and 100%. The portfolio allocation is dynamically adjusted on a monthly basis according to the risk ratios prevailing in the market. Equity and bond investments are risk-based and take into account liquidity and ESG (environmental, social, governance) criteria. The fund aims to reduce (or increase) the equity exposure during periods of high (or low) risk. Investors have a high risk tolerance and accept large price fluctuations and deviations from the benchmark index.

Fund Facts

Inception date	31.10.2019
Fund manager	OLZ AG
Location	Bern
Fund Management	Credit Suisse Funds AG
Custodian	Credit Suisse (Schweiz) AG
Fund type	Retail fund
Fund domicile	Switzerland
Fund currency	CHF
Accounting year end	August 31
Allocation of result	reinvestment
Issue / redemption	daily

Benchmark (BM)	Custom Benchmark ¹
Total net assets (in mil.)	29.02

Unit Class

Unit class	I
Unit class currency	CHF
ISIN	CH0420179720
Valor no.	42017972
Bloomberg ticker	OLSIDYI SW
Net asset value (NAV)	82.75
1 Year High	85.65
1 Year Low	78.37

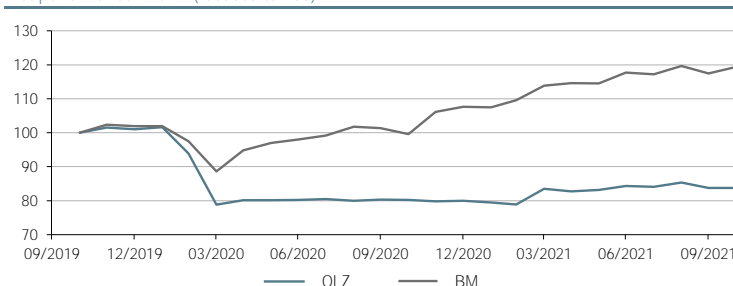
Fees and Costs

TER (as of 31.08.2020) in %	0.80
Issue commission in %	none
Redemption commission in %	none
Purchase fee paid to fund in %	0.20
Sales fee paid to fund in %	0.20

Risk indicators*	Fund	BM
Correlation with BM	0.79	-
Volatility p.a. in %	13.84	11.43
Sharpe Ratio	-	0.81
Maximum drawdown in %	-22.42	-13.41

* since inception

Net performance in CHF (rebased to 100)



Source: OLZ AG | Past performance is no guarantee of future trends. The performance shown does not take account of any commissions and costs charged when subscribing to and redeeming units.

Net performance until 31.10.2021 in %

	1 month	3 months	6 months	1 year	3 years	5 years	since inception
Fund	-0.02	-0.42	1.20	4.32	-	-	-16.28
BM	1.64	1.81	4.19	19.89	-	-	19.36

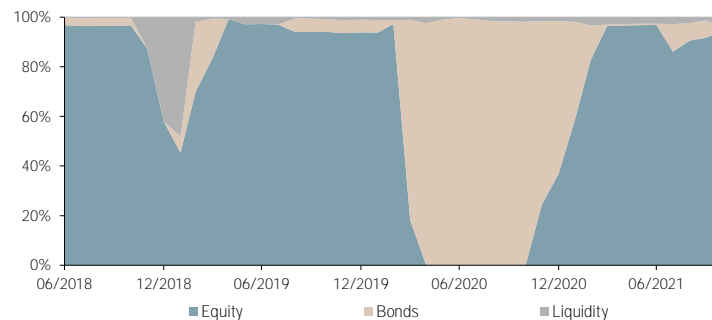
Net performance per calendar year in %

	2015	2016	2017	2018	2019*	2020	2021 (YTD)
Fund	-	-	-	-	1.02	-20.87	4.73
BM	-	-	-	-	1.96	5.58	10.88

* 31.10.2019 - 31.12.2019

Asset allocation	in %	Currencies after hedging	in %
Liquidity	4.0	CHF	43.2
Bonds	1.4	Others	56.8
Equity	94.6		

Historical asset allocation



Source: OLZ AG

ESG metrics*

MSCI ESG Score	6.7
MSCI ESG Rating	A

* as of last rebalancing

¹ 60% MSCI AC World Index NR (BB Ticker NDUEACWF); 20% Swiss Bond Index AAA-BBB TR (BB Ticker SBR14T); 20% FTSE Non-CHF WGBI CHF hedged (BB Ticker SBWNGSZC)

This document is provided for information and marketing purposes only and is for the exclusive use of the recipient. It was produced by OLZ AG with the greatest of care and to the best of its knowledge and belief. However, the OLZ AG provides no guarantee with regard to its content and completeness and does not accept any liability for losses which might arise from making use of this information. The opinions expressed in this document are those of OLZ AG at the time of writing and are subject to change at any time without notice. If nothing is indicated to the contrary, all figures are unaudited. This document does not constitute an offer or a recommendation to buy or sell financial instruments or banking services and does not release the recipient from exercising his/her own judgment. The recipient is in particular recommended to check that the information provided is in line with his/her own circumstances with regard to any legal, regulatory, tax or other consequences, if necessary with the help of a professional advisor. This document may not be reproduced either in part or in full without the written permission of OLZ AG. It is expressly not intended for persons who, due to their nationality or place of residence, are not permitted access to such information under local law. Neither this document nor any copy thereof may be sent, taken into or distributed in the United States or to any U. S. person (within the meaning of Regulation S of the US Securities Act 1933 in its applicable form). Every investment involves risk, especially with regard to fluctuations in value and return. Investments in foreign currencies involve the additional risk that the foreign currency might lose value against the investor's reference currency. Historical performance indications and financial market scenarios are no guarantee for current or future performance. Performance indications do not consider commissions levied at subscription and/or redemption. Furthermore, no guarantee can be given that the performance of the benchmark will be reached or outperformed. You may request further information from your bank/relationship manager. Potential conflicts of interest cannot be excluded. This document must not be read as independent research. Subscriptions are only valid on the basis of the current sales prospectus with the integrated fund contract, the simplified prospectus, and the most recent annual report (or semi-annual report, if more recent). This document is expressly not intended for persons for whom access to this type of information is forbidden. The target group of investors may also be restricted in the fund contract for specific subfunds or unit classes. The fund contract and the annual report are available free of charge from OLZ AG, Bern, the fund management company, Credit Suisse Funds AG, Zurich, or from the custodian bank, CREDIT SUISSE (Schweiz) AG, Zurich. The Total Expense Ratio (TER) is the sum of all commissions and costs charged on an ongoing basis to the average fund assets (operating expenses). The value is taken from the last available annual report.